

PV2018

ENSURING THE LONG-TERM PRESERVATION AND  
VALUE ADDING TO SCIENTIFIC AND TECHNICAL DATA

## Previous Events

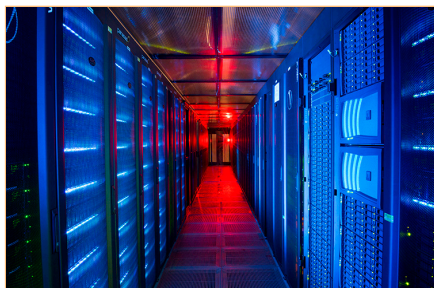
- CNES in Toulouse (PV 2002)
- ESA-ESRIN in Frascati (PV 2004)
- DCC in Edinburgh (PV 2005)
- DLR in Oberpfaffenhofen (PV 2007)
- ESA-ESAC in Madrid (PV 2009)
- CNES in Toulouse (PV 2011)
- ESA-ESRIN in Frascati (PV 2013)
- EUMETSAT in Darmstadt (PV 2015)

## Scientific Committee

**Conference Chair:** Tony Hey -  
Chief Data Scientist STFC  
**Conference Co-chair:** Harald  
Rothfuss – EUMETSAT



**Head of Scientific Programme  
Committee:** Esther Conway - CEDA  
David Giarretta - APA  
Brian Mathews - STFC  
Richard Moreno- CNES  
Nancy Ritchey – NOAA NCDC  
Tom Stein – NASA/PDS  
Reta Beebe - NASA/PDS  
Christophe Arviset - ESA ESAC  
Mirko Albani - ESA ESRIN  
Pascal Lecomte - ESA Climate  
Change Office  
Kevin Ashley - DCC  
Jamie Shiers - CERN  
Eberhard Mikusch - DLR  
Phil Kershaw – CEDA  
Richard Hilton – Satellite  
Application Catapult



## Key Dates

Call for abstracts 1st  
Announcement – **30<sup>th</sup> Sept 2017**

Conference Registration - **1st  
Jan 2018**

Abstract Submission Deadline –  
**28<sup>th</sup> Feb 2018**

Notification to Authors - **2nd  
April 2018**

End Early Bird Registration - **14  
April 2018**

Full paper and poster deadline –  
**30<sup>th</sup> April 2018**

PV 2018 Conference – **15<sup>th</sup> –  
17<sup>th</sup> May 2018**



### Contact

Esther Conway  
Centre for Environmental Data  
Analysis

Email: [esther.conway@stfc.ac.uk](mailto:esther.conway@stfc.ac.uk)

Website:

<http://www.ceda.ac.uk/contact/pv2018/>



**15<sup>th</sup> – 17<sup>th</sup> May 2018**  
**Rutherford Appleton  
Laboratory Harwell  
Oxfordshire, UK**

**Adding Value and  
Preserving Data**



**UK SPACE  
AGENCY**

# PV2018 Conference

## Conference Sessions

For its eighth edition, the conference series moves to UKSA, hosted at the Rutherford Appleton Laboratory part of the Harwell Space Cluster in the UK to continue addressing prospects in the domain of data preservation, stewardship and value adding of scientific data and research related information.

An end-to-end management approach for the long-term data preservation is key to ensure that there is no loss of information and data. It also entails the access to the archived data – including discovery, metadata, formats and interoperability considerations with the relevant standards – as well as the curation processes aimed at improving the information content and the usability of the archived data. In addition to emergent standards technologies and best practice we would like to use this conference as an opportunity to explore issues of data management planning and archive appraisal.

We are also entering the era of big data; for this conference year we would like to extend a special invite to large-scale scientific archives so we can facilitate discussion of emergent issues across scientific domains. As we move to new and exciting technology age, we are seeing large-scale collaborations occurring on state of art virtual research environments and novel collaborative infrastructures.

We would also invite participation from projects, organizations or individuals developing novel data services within or as a result of these environments. This includes smaller bespoke archives wishing to integrate with larger data holdings to generate targeted knowledge and data services.



### Session 1

Data stewardship approaches to ensure long-term data and knowledge preservation and data standards

### Session 2

Adding value to data and facilitation of data use

### Session 3

Virtual Research Environments for science data exploitation and value adding

### Session 4

Data preservation in practice: past (present) and future

## Adding Value and Preserving Data

